

Actisense **PRO-NDC-1E**

Launch: 01 February 2023

Stand: G46



Why is this product Innovative?

The PRO-NDC-1E is the latest innovative NMEA data multiplexer from Actisense. Built on the industry's most flexible platform, the device solves many typical NMEA 0183 interconnectivity headaches, allowing for up to 5 inputs to be intelligently combined and routed to its 2 outputs, featuring the company's celebrated ISO-Drive® isolation protection technology. Advanced features allow data rate conversion, auto-switching and advanced sentence-based routing and blocking.

Actisense have added the ability to stream NMEA 0183 data over Ethernet for even faster data throughput. PRO-NDC-1E has also received RINA Type Approval, making it attractive to even more vessels in the commercial marine sector.

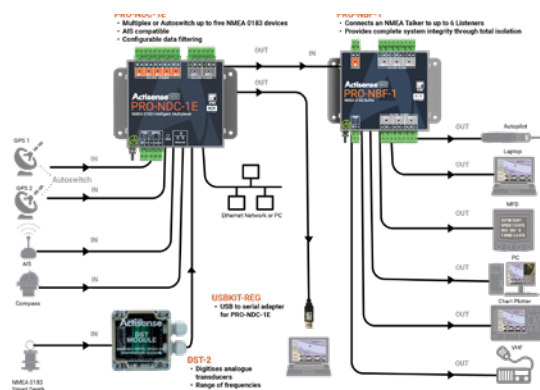


Description

The PRO-NDC-1E is the latest innovative NMEA data multiplexer from Actisense. Built on the industry's most flexible platform, the device solves many typical NMEA 0183 interconnectivity headaches, allowing for up to 5 inputs to be intelligently combined and routed to its 2 outputs, featuring the company's celebrated ISO-Drive® isolation protection technology. Advanced features allow data rate conversion, auto-switching and advanced sentence-based routing and blocking.

Actisense have added the ability to stream NMEA 0183 data over Ethernet for even faster data throughput. PRO-NDC-1E has also received RINA Type Approval, making it attractive to even more vessels in the commercial marine sector.

The configuration tool is accessible via any popular web browser using the Ethernet port, which



supports both direct and network connections. Industry leading isolation is provided on all inputs and outputs as standard so that connected devices safely avoid hazardous ground loops, the number one cause of product failure in NMEA 0183 networks. This makes the PRO-NDC-1E robust enough to handle any NMEA 0183 installation.

Pluggable connectors allow new devices to be easily installed without needing to remove the PRO-NDC-1E from its mounted location. An optional professional DIN rail mounting mechanism keeps the PRO-NDC-1E secure in high vibration environments.

Artemis Technologies
Artemis EF-24 Passenger Ferry

Launch: 25 September 2022

Stand: H3

Artemis
TECHNOLOGIES

Why is this product Innovative?

In September 2022, launched the 100% electric, Artemis EF-24 Passenger ferry to market. Developed by the Belfast Maritime Consortium, and supported by UKRI's Strength in Places fund. The Artemis EF-24 Passenger is powered by the market leading Artemis eFoil® system, which integrates a high-power density electric drive train into the flight-controlled hydrofoils. This vessel represents a game changer for water-based cities around the world as the high-speed passenger ferry provides an innovative solution to reduce congestion, noise, and air pollution.



Description



With a top speed of 38 knots, the Artemis EF-24 Passenger ferry offers a range of 115 nautical miles at a 25 knots cruise speed and produces incredible fuel savings of up to 85% compared to conventional high-speed diesel ferries. The Artemis EF-24 Passenger provides a cost-effective public transport solution that helps address air and noise pollution and eases congestion by encouraging multimodal transport.

Powered by the patented Artemis eFoil electric propulsion system, the 24m vessels will fly above the water, providing a comfortable ride for up to 150 passengers on board, mitigating effects of seasickness and producing minimal wake at high-speed, significantly reducing the impact on shorelines.

The revolutionary ferry is among several zero-emission vessels being developed by Artemis Technologies including the Artemis EF-12 Workboat and Artemis EF-12 CTV. The green maritime design company is a spin-off from the Artemis Racing team that competed in the America's Cup. These 24 metre vessels designed and built by Artemis Technologies represent ground-breaking green innovations for commercial ferries, radically different from traditional ferries in operation.

The first EF-24 Passenger ferry will be launched in 2024, and operated by Condor Ferries, servicing a route between Belfast and Bangor, Northern Ireland. Customer deliveries will begin in 2025.

Bartech Green Box Solution

Launch: 01 June 2022

Stand: K1m



Why is this product Innovative?

Emission reduction is hugely important to us, and we've spent the last five years thinking about what we can do, en masse, to help our customers to reduce their emissions.

A significant stumbling block within our industry is the reliance on stored hydrogen to reduce emissions – its difficult (and potentially dangerous) to store, and the acid by-product that's created over time is also hazardous.

We've worked with scientists to create a product that uses distilled water instead, which means no acid – the Green Box solution.

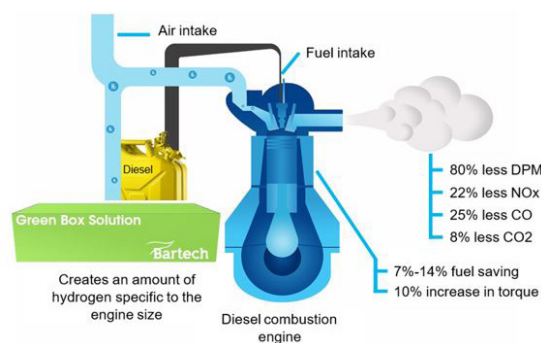


Description

What is the Green Box solution?

Powered by distilled water, the Green Box generated hydrogen on engine demand from the ECU, reducing the diesel fuel required and lowering overall emissions as a result – independent testing has shown:

- An 80% reduction in carbon particulate matter
- Reduction in fuel costs by up to 14%
- 65% reduction in soot content in oil
- 22% less NOx
- 25% less CO
- 8% less CO2



Rather than acid being the by-product, the use of distilled water means that steam is what's left, rather than hazardous acid.

A Green Box will last 25 years + with annual servicing, following a 6-month service after installation, and:

- Uses no acid or chemicals
- Requires no H2 storage vessel
- Features an electronic control system to optimise engine performance

Vessel - 2 x Detroit S60's

We purchased 1 x GreenBox unit and fitted to one of 2 x Detroit S60's in one of our crafts, after 2 months of records we were suitably impressed with a reduction of around 10%.

We have also had oil sample testing from both engines and the soot level was considerably lower on the engine fitted with the unit. We are very Impressed with the emission.

CA Clase UK Ltd
Poynting Ripple

Launch: March 2023

Stand: Ag

CA Clase

Why is this product Innovative?

The POYNTING RIPPLE has up to 16 x 5G antennas housed in a dome which allows 4/5G Routers also to be installed within the dome. This allows very short cable lengths as to not affect the performance of the equipment with no loss of signal. You just need power and ethernet cabling to the unit. This revolutionary design has been proven to get up to 90km offshore, which is a game changer in the cellular market. All this in a neat, small, lightweight package.

Description

The POYNTING RIPPLE's antennas IP65 enclosure is designed to fit a variety of routers and networking modules, transforming the antenna enclosure into an all in one system.

The RIPPLE is 45cm in diameter, 52.5cm tall and weighs just 15.5Kg



The enclosure can accommodate routers up to the size of 300 x 250 x 110 mm, that can be mounted directly onto the base plate, which works as a heat sink to help with cooling.

The RIPPLE has a total of 16 x 5G antennas inside, all of them omnidirectional, but divided into vertical and horizontal polarizations which covers both cellular polarization's available.

The RIPPLE is a 5G antenna that works on frequencies 617 to 7200 MHz that covers all 4/5G around the world. It also has 2 built in GPS antennas and 4 x Dual-band Wi-Fi.

It has been proven to get up to 90 Km offshore (4G) which would be ideal for the vessels that work offshore.

All this in a small package and at an affordable price.

Dacoma Airkeel stabilizer for work- and crewboats

Launch: 25 April 2023

Stand: SB30

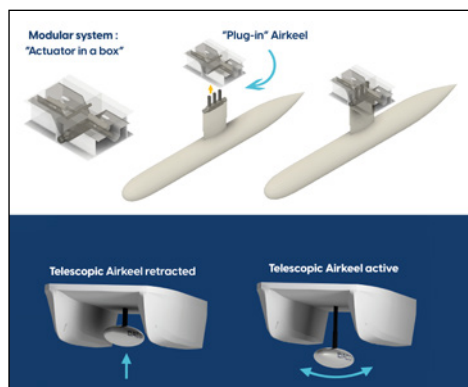
DACOMA

Why is this product Innovative?

Dacoma's patented Airkeel stabilizers provide significant improvements in vessel stability, reducing the risk of motion sickness and improving crew safety and comfort onboard crew- and workboats. Additionally, Airkeel stabilizers are designed to be energy-efficient, can easily be (retro-) fitted to any type of vessels up to 40m length, including CTV catamarans, work at all speeds, even when idling, and can be retracted for draft minimization. The Airkeel is unique because it works with buoyancy. The main element is an air-filled appendage attached to the underside of a vessel which produces a pendulum motion that counteracts rolling motion, keeping it stable.



Description



About 100-160 days/year, offshore wind farms are inaccessible to crew transfer by CTVs (Crew Transfer Vessels) due to adverse weather, depending on how exposed the locations are. During the rest of the year, wind turbine technicians often suffer from motion sickness causing loss of working productivity at the wind turbine during installation and O&M. Our CTV Airkeel stabilizer opens 25% of the adverse weather window for operations, drastically reducing motion sickness, and increasing crew safety. It is the most fuel economic stabilizer system in the market, and hence has a low carbon footprint. Equipped with the Airkeel stabilizer, the buoyancy of the vessel is increased, adding payload and crane capacity to the vessel.

At Seawork 23, we will present our successful performance tests and demonstrations with an Airkeel stabilizer mounted to a ProZero Fast Rescue Craft from Tuco Yachts, representing the work- and crewboat market. In addition, we will disclose the status of our first pilot customer project on integrating an Airkeel into a 24m CTV from Opus Marine. A 1:20 model visualizing the function of the Airkeel stabilizer will be on display. No more rockin', no more rolling'. Safe and comfortable crew transfer with Airkeel stabilizers.

Dometic Marine **Dometic Breathe 4500**

Launch: May 2023

Stand: Q2



Why is this product Innovative?

Our Bipolar Ionizer, a breakthrough in air purification technology, is a top contender for the Innovation Award. A bipolar ionizer is an advanced device that releases both positive and negative ions into the air to neutralize harmful particles and improve indoor air quality. What sets our Bipolar Ionizer apart is its exceptional voltage adaptability (70V to 240V), enabling seamless integration across a wide range of HVAC systems.



Additionally, the innovative inclusion of remote brushes allows for flexible installation in various locations such as fans, ductwork, transition boxes, or air outlet grilles. Our Bipolar Ionizer revolutionizes air purification with its cutting-edge features, making it a deserving candidate for the award.

Description



The Dometic Breathe Ionizer is an easy-to-install upgrade kit for your marine air conditioner, featuring flexible mounting options: fan, ductwork, transition boxes, or directly behind the air outlet grille. The unit is designed for the marine environment, featuring aluminium inserts, coated electrical boards and corrosive resistant hardware.

Using state-of-the-art ionization technology, the Dometic Breathe air purifier reduces dust particles, bacteria, mold build-up and unpleasant odours onboard. The Breathe's compact, space-saving design makes it ideal for confined spaces without ruining your boat's aesthetic.

It's energy-saving and can be connected directly to the fan ensuring power is supplied only when needed. The LED light is used to clearly identify the unit is in operation. While no consumable or replacement parts are required for maintenance, simply clean the ionizer brushes.

Utilizing its universal power supply (70 to 240 VAC) the unit works wherever you are in the world. Effectively cleaning and purifying the air in your boat 24/7, no matter the location or condition.

EPropulsion **I-Series Electric Inboard Motor**

Launch: November 2022

Stand: Q8



Why is this product Innovative?

ePropulsion I-Series is an environmental-friendly electric inboard motor series packed with innovative technology, smart features and human operation design. Underpinned by the highly integrated and modular ePropulsion Smart System Architecture (eSSA) and the IoT connectivity service, it provides users with an easy-to-use, intelligent, safe and reliable experience unlike any other.



Description

ePropulsion I-Series electric inboard motor (10kW/20kW/40kW) is an environmentally friendly electric inboard motor series packed with innovative technology, smart features and easy-to-use design, for leisure marine and commercial applications on small and medium size boats.

It has a compact design that integrates five functional modules of motor, gearbox, motor controller, system control unit and cooling system into a small space, taking up 60% less space and 65% lighter than a typical combustion engine of equivalent power, and 30% lighter than other electric inboard motors of similar power. It is quick and simple to install and maintain for both new boat installation and refits.

The I-Series is underpinned by the highly integrated and modular ePropulsion Smart System Architecture (eSSA) that takes the electronic control unit (ECU) as the core, integrating the electric drive system, interactive system, battery system and cloud all into one. It delivers safe and reliable performance thanks to its fault diagnosis system and full redundancy design. It also supports the integration of the ePropulsion Connectivity Service, based on boating IoT technology, allowing boat owners and fleet managers to communicate with their boats securely and reliably without additional accessories.



Frog Environmental
**Bubble Tubing for Coastal Sound
Attenuation (UK)**

Launch: 22 July 2022

Stand: M4



Why is this product Innovative?

Bubble Tubing®: UK's first underwater sound control innovation to bring construction noise below the danger level for salmon and other marine life.

Bubble Tubing® is a self-sinking, flexible, linear fine bubble diffuser, developed to provide exemplary aeration but through research it proved to be an incredible tool to reduce harmful noise underwater.



It releases an even stream of air over its entire length from the seabed to the surface of fresh or salt water. Control of bubble size as well as homogeneity gives predictable results.

Bubble Tubing® can create mobile or fixed air barriers. It is easy to install, durable and self-cleansing.

Description

Bubble Tubing® is used to create a bubble curtain, a vertical wall of air bubbles that controls sound from construction activities and protects marine receptors.

A unique perforated pipe which allows air to escape as fine bubbles, the pipe is weighted to the bed and air is pumped through the tube using a compressor. The compressor size and output is dictated by water depth, current, length and diameter of the tube, alongside the optimal airflow for sound mitigation to work correctly.



John F Hunt Regeneration were the first to use this innovative product to control noise from piling operations on the River Tyne. A 90m long double line was designed and an agreement to use this new technology was obtained from the Environment Agency and the Marine Management Organisation to include acoustic measurements during piling, with and without operation of the bubble curtain, confirming the performance of Bubble Tubing®.

Sound reductions greater than 20dB were recorded when the bubble curtain was in operation. This 99% reduction brought worst-case noise levels down to 140db at 750m from the piling site, demonstrating assumptions made at the design stage were correct, achieving environmental protection as well as delivering operational efficiencies on site.

Gecko Head Gear Ltd

Gecko One

Launch: June 2023

Stand: Q81



Why is this product Innovative?

The Gecko One is a world first. 25 years of marine helmet design have gone into producing the Gecko One to make it stand out against the ordinary. A modular helmet to adapt to different environments/conditions/ requirements and preferences, while maintaining its core principle, to protect. Our patented inflatable liner has been redesigned with a push pump at the back to create a custom, encompassing fit for all users.

Description

The Gecko One is a modular helmet, the adaptability of the product combines the protection provided by all our best-selling helmets into one. The base of the helmet starts with our cut-away shape, lined with our inflatable liner, this core protects the whole head whilst allowing for the addition of ear defenders for loud environments. To add more protection around the ears quickly adjust the helmet by clicking on the side pieces of the helmet and optionally switch out the liner for the open face shape and you have more surrounding protection. Lastly for full face coverage, which is advised on jet skis and high-speed watercraft, click on the frontal face piece which provides 360-degree coverage. All states of the helmet can be fitted with a visor (BS4110 accredited) as well as a PTT communication headset.



Halyard
Wavebrite SMART

Launch: November 2022

Stand: F10



Why is this product Innovative?

Wavebrite SMART is the only marine grey water filtration product that is self-monitoring, gives a clear indication of how grey water onboard is being responsibly processed with due care for the environment. Information such as daily volume processed, accumulative volume, status of the various filters within the unit is all displayed on a screen with audio and visual alarms. Unlike other systems there is no need for grey water holding tanks, processing is real time overboard without the need for residence time or the use of chemicals all this while overboard discharge meets the EU Waste Water Directive.



Description

Wavebrite SMART is the only marine grey water filtration product that is self-monitoring, gives a clear indication of how grey water onboard is being responsibly processed with due care for the environment. Information such as daily volume processed, accumulative volume, status of the various filters within the unit is all displayed on a screen with audio and visual alarms. This information comes from various sensors through a main PCB board, the screen can also be remote from the unit, all this while overboard discharge meets the EU Waste Water Directive. Firmware on the unit can be updated as required via a mobile phone. Grey water is discharged real time which negates the need for grey water holding tanks which significantly reduces weight in the boat and therefore also the main mover power requirement and along with those emissions, improving the boats sustainability on several fronts. The unit is compact, has its own pump within a sound and vibration suppressed enclosure, Simple to install and maintain with a high capacity of 20,000L between filter cartridge changes. This innovative product is based on the original Wavebrite filter unit that achieved customer acceptance in both small commercial and leisure marine sectors.

Hefring Marine

Intelligent Marine Assistance System

A neural network determines and guides
for the highest fuel-optimized speed

Launch: January to March 2023

Stand: F25



Why is this product Innovative?

Hefring Marine has collected and analysed data that shows that the fuel consumption in an average boat trip tends to be quite a bit higher than it needs to be, from 15-20% more fuel consumption than necessary if operators only had the right information. Therefore, the company has developed a neural network (an AI) onboard that learns how a particular vessel operates, how heavy it is, where it is being used and in what conditions, learns what the fuel consumption curve looks like at any given point in time and finds the optimal speed to maintain in any given condition.



Description

A new AI-powered solution for fuel-optimized speed. Hefring Marine is deploying a new solution on the Intelligent Marine Assistance System that determines the optimum highest speed to maximize fuel efficiency and reduce CO2 emissions. A neural network uses real fuel and engine data, impacts, motions, and speed to determine the best eco-speed to follow in the prevailing conditions that minimizes impact to trip time. The operator is provided with an interface that shows the optimum "Eco Speed", estimated fuel reduction, and expected added time to the trip. Preliminary research and trials have demonstrated average savings of between 15-18% and up to 25% in certain cases.



Hendy Power **FPT Industrial Cursor 16**

Launch: 24 February 2023

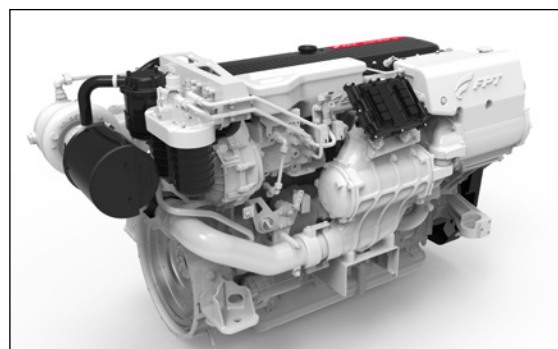
Stand: Q64

HENDY

P O W E R

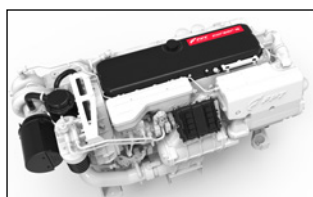
Why is this product Innovative?

The FPT Industrial marine Cursor engines range offers outstanding power output standards with minimum displacement and the highest levels of reliability together with world-class environmental credentials, meeting the most stringent emissions regulations; thanks to the partnership with Frydenbø who have designed and developed a compact IMO Tier III compliant selective catalytic reduction (SCR) system suitable for most of the FPT Industrial marine engines range.



In addition, the engine is compatible with MY FPT, a remote engine monitoring app which can provide operators with real-time information together with a wealth of engine data.

Description



The FPT Industrial marine Cursor engines range offers outstanding power output standards with minimum displacement and the highest levels of reliability, together with world-class environmental credentials.

Cursor state-of-the-art technologies guarantee high injection pressure and adamant timing precision under any operating condition which translates into rapid response at all engine speeds. The 15.9 litre high-performance version can reach 735 kW @ 2,300 rpm maximum power rating.

Cursor engines for their high innovation level, easy maintenance (up to 600 hours service intervals), and extreme efficiency – that result in competitive operating costs.

All engines can be customised. Options include electronic remote control, monitoring systems, and compliance with international emission standards worldwide such as IMO MARPOL Tier 2, EU-RCD Stage 2, EU-IWV, USA-EPA Tier 3 Recreational & Commercial, and RINA propulsion homologation. FPT Industrial has more than a century of experience in the marine sector with ongoing research and development to provide users with high-quality, fuel-efficient engines designed to guarantee maximum performance and efficiency in the most demanding of sea conditions.

Environmental concerns are hugely important for the marine industry and with the engine range from FPT Industrial, operators know that they are not only meeting all regulations but there is no sacrifice in terms of performance.

HST Marine
HST Frances

Launch: 09 February 2023

Stand: Q27

HST
A PURUS WIND COMPANY

Why is this product Innovative?

Developed from ten years of data and experience in offshore wind vessel design, alongside extensive collaboration with wind farm owners and turbine manufacturers, HST Frances responds directly to the needs of the user using the latest electric battery technology.

HST Frances includes improvements from its sister vessel HST Ella. Based on user feedback, the main saloon's seating arrangement was improved. The layout offers great port/starboard and forward views and all-around access. The electrical system on board was simplified, and the design of the wheelhouse was streamlined to take use of the newest technologies.



Description



The HST Frances is a hybrid crew transfer vessel propelled by a servo-gear Ecoflow Propulsor, a controllable-pitch propeller system. This system takes power from either a high-efficiency electric motor or a CAT C32 main engine. This means the vessel has the capability to operate silently, with zero emissions, as an electric boat at speeds between 10 and 15 knots. Further, when operating as a diesel boat at transit speeds, the boat is capable of operating efficiently and comfortably at speeds of 25 knots. Once at the turbine, HST Frances is capable of delivering a 19-tonne bollard push. Coupled

with the advanced hull form and superior bow height, this will allow the vessel to transfer comfortably in seas in excess of 1.75m HS.

IWCS (Dorian Marine) **IWCS iriSelect Black Box**

Launch: February 2023

Stand: P7



Why is this product Innovative?

The IWCS iriSelect Black Box is a revolutionary device that redefines communication control and flexibility, specifically designed to seamlessly integrate with your plotter/MFD (Multi-Function Display) interface. With this powerful integration, users can effortlessly manage their communication settings directly from their plotter/MFD, streamlining operations and enhancing user-friendliness.

Description

At the heart of the iriSelect Black Box lies its ability to dynamically change voice groups, radio access rights, and other essential parameters in real-time. This means that users can make instant adjustments during critical missions, ensuring optimal communication performance. The intuitive user interface presented on the plotter/MFD provides a visual representation of the audio routing within the system, making it easy for users to navigate and make informed decisions.



Moreover, the iriSelect Black Box is highly versatile and can seamlessly integrate with various communication setups, including external handheld radios, fixed radios, and iriSound Audio Mixers. It even supports Bluetooth connectivity, expanding its compatibility and enabling wireless communication capabilities.

With its plotter/MFD interface integration, dynamic control features, and user-friendly design, the IWCS iriSelect Black Box revolutionizes communication management, providing unparalleled convenience

and efficiency. Experience the power of this advanced device and unleash the full potential of your communication system with ease.

Marsun Public Company Limited **Trimaran**

Launch: 07 December 2022

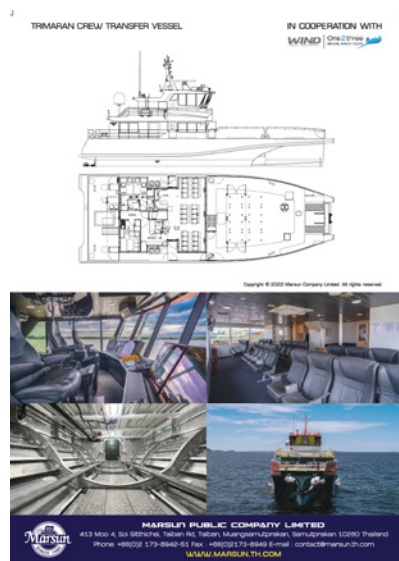
Stand: D36

MARSUN
SHIP BUILDER & REPAIRER SINCE 1980

Why is this product Innovative?

Marsun Shipyard successful and built and delivery the first pair of Trimaran Crew Transfer Vessel to U-Mind Marine Offshore for their operation in Taiwan. This is the first time that the shipyard succeeded in building this advanced hull design in Asia. The three super slender hulls require highly skill craftsmanship and vast experience from the shipyard to construct. The vessels are also equipped with specially design equipment and feature such as active foils, semi-SWATH function, interceptors, soft bow fender and etc. This pair of Trimaran CTV are built under the High-Speed Craft Passenger notation whereby many stringent requirements are to be embedded. These vessels are also built with semi-autonomous notation in which require the shipyard to execute extensive sensors and highly complex alarm and monitoring systems.

Description



The vessels were built under Danish flag and BV class with full provision of the transferring to Taiwanese Flag and CR class. Because of this, the two vessels then were transferred to Taiwanese Flag and CR class smoothly in Taiwan without trouble and within only short period.

Speaking of performance of the Trimaran CTV, because the two vessels were built under the weight budget and quality of the hull smoothness from the shipyard, they can achieve the speed performance of 35 knots during sea trial which is 6 knots more than contractual speed.

With all abovementioned, it is evident that Marsun Shipyard possess true experience to build the high performance and high-speed aluminium vessel, most suitable and sufficient to build high quality CTV for Offshore Windfarm for Ventus Marine Offshore.

MetOcean Telematics

STREAM+

Launch: 14 April 2023

Stand: B17

metocean[®]
telematics

Why is this product Innovative?

Introducing the STREAM+ - a revolutionary Iridium® transceiver package that brings affordable, two-way connectivity to every corner of the globe. With its lightweight design, versatile features, and flexible integration options, the STREAM+ is the ultimate solution for field applications with size, weight, and power constraints. What's more, the STREAM+ enables effortless access to your data through a range of file management services, including Amazon Web Service (AWS), providing unprecedented flexibility and convenience. Powered by the Iridium Certus® 100 midband service and Iridium Messaging TransportSM (IMTSM), the STREAM+ ensures secure, uninterrupted connectivity, making it the perfect choice for customers that demand reliable, high-performance communication solutions.



Description



MetOcean Telematics' STREAM+ IoT device is a game-changer for industries requiring reliable M2M connectivity and secure data transmission. Using Iridium Certus® 100 midband service and Iridium Messaging TransportSM (IMTSM), the STREAM+ ensures uninterrupted, real-time communication even in the most remote and harsh environments.

The STREAM+ is perfect for oceanographic research, environmental monitoring, and underwater exploration, where timely decision-making and efficient data management are critical. It can also benefit the mining and heavy construction industries, enhancing operational efficiency and ensuring safer practices.

The device is also ideal for the fishing industry, where it provides reliable communication and up-to-date information to fishermen, leading to higher catch rates and safer practices. Moreover, it is an excellent solution for farming and agriculture, allowing remote transmission of critical data and enabling performance optimization while reducing operational costs.

Finally, the STREAM+ is an essential asset for military and defence applications, offering reliable M2M connectivity and global satellite coverage. Its compact size and low power consumption make it an ideal solution for field operations, ensuring critical information is delivered on time. With its robust protocols and seamless integration capabilities, the STREAM+ IoT device is a valuable asset for any industry requiring reliable, secure, and efficient communication solutions.

NRG Marine - Sonihull Ultrasonic Antifouling System

Launch: 03 January 2023

Stand: H18

SONIHULL
ULTRASONIC ANTI-FOULING SYSTEM



Why is this product Innovative?

Sonihull are the commercial marine experts in ultrasonic antifouling protection. However, since last summer we have been shaping the technology and perfecting the sound to be more suited to propellers. The adapted technology has helped to keep propeller surfaces clean which helps keep large commercial vessels and workboats working at optimal efficiency level. Helping to keep the ship speed at a constant power - or a power increase to maintain a constant speed. Reduced propeller efficiency levels have negative economic and environmental impacts through increased fuel consumption and atmospheric emissions, including GHG, as well as increased fuel costs and reduction in speed/power.



Description



The new propeller specific system has a new sound that is better suited to keeping vessel propellers protected more efficiently, and Sonihull has used its dedicated ultrasonic laboratory (The only one globally) to perfect the propeller "signal". The Sonihull system unlike traditional methods of antifouling, provides effective protection without any environmental pollution from toxic chemicals and microplastics in traditional antifouling coatings. The Sonihull

system produces multiple bursts of ultrasonic energy in a range of targeted pulse frequencies. These pulses are transmitted through the material the transducers are attached to. The ultrasound produces a pattern of increasing and decreasing pressure on the surface of the material in a process called non-inertial cavitation. Microscopic bubbles are created during the reduced pressure cycle, then imploded as the pressure increases. Unlike antifouling paint, the antifouling system works when the vessel is harboured up and whilst sailing, therefore it removes the need to drydock every couple of months. This year the company was awarded the first Kings Award for Enterprise for our outstanding achievements. Sonihull has the only dedicated laboratory in the world in this technology and continues to commit itself to being pioneers in innovative ultrasonic technology.

Ocean Safety
Ocean Signal SafeSea EPIRB3 Pro

Launch: 01 December 2022

Stand: F4



Why is this product Innovative?

The Ocean Signal SafeSea EPIRB3 Pro is the world's first mobile connected AIS EPIRB with Return Link Service (RLS) alerting. Combining multiple technologies in a single package, the beacon provides survivors with the highest chance of rapid local or global rescue. The Category I EPIRB3 Pro features integrated AIS (Automatic Identification System), NFC (Near Field Communication) technology for use with the free Ocean Signal mobile app, and compatibility with Return Link Service (RLS) alerting. The slim, lightweight beacon, with 10-year battery life, also includes GNSS positioning, 406 MHz Cospas-Sarsat distress signal with MEOSAR compatibility and 121.5 MHz local homing signal.



Description



Combining the power of the latest safety technologies, the Ocean Signal SafeSea EPIRB3 Pro significantly increases the speed of location and aid, enhancing the chance of rescue in an emergency for commercial users.

The slim, lightweight beacon features integrated AIS (Automatic Identification System), NFC (Near Field Communication) technology for use with the free Ocean Signal mobile app, and compatibility with Return Link Service (RLS) alerting. With 10-year battery life, the device also includes GNSS (Global Navigation Satellite System) positioning, 406 MHz Cospas-Sarsat distress signal with MEOSAR compatibility and 121.5 MHz local homing signal.

Offering the best chance of rapid local or global rescue, the EPIRB3 Pro transmits the survivor's emergency signal to the global satellite rescue system. RLS technology provides confirmation that the distress message and location has been received.

The beacon also broadcasts an AIS safety message on VHF frequencies that can be seen immediately by any AIS equipped vessel nearby, enabling first stage rescue and recovery operations to start immediately.

The EPIRB3 Pro, with visible strobe and night vision lights to facilitate rescue in poor visibility or at night, comes with the Category I auto release, float-free bracket providing full IMO regulatory compliance for SOLAS vessels.

Ocean Safety **Ocean Signal rescueME PLB3 Personal Locator Beacon**

Launch: 01 December 2022

Stand: F4



Why is this product Innovative?

Delivering a comprehensive communication link to emergency services in a man overboard emergency, the Ocean Signal rescueME PLB3 combines a compact AIS MOB device and Cospas-Sarsat PLB (personal locator beacon) in one package. In an industry first, the mobile connected device integrates GNSS positioning, 406 MHz, 121.5 MHz signals and AIS transmissions, as well as the new Galileo Return Link Service (RLS). By harnessing long and short-range detection technologies, the PLB3 offers an unprecedented level of safety and reassurance that will help save more lives at sea, while also aiding the rescue services in locating and helping survivors.

Description



The Ocean Signal rescueME PLB3 personal locator beacon is the most powerful safety solution for rapid rescue in a man overboard emergency.

Designed for simple life jacket integration, the PLB3 combines multiple levels of signal technology within a 406 MHz PLB for the first time, integrating GNSS (Global Navigation Satellite System) positioning, 406MHz, 121.5MHz signals and AIS transmissions, as well as the new Galileo Return Link Service (RLS) technology.

The device provides a survivor with the best chance of quickly alerting others to a distress situation by uniting the global response capabilities of the Cospas-Sarsat rescue services with AIS technology to indicate an MOB position to nearby vessels or aircraft for immediate aid.

Ocean Signal has also introduced a Near Field Communications (NFC) app, enabling beacon owners to review self-test results, view GNSS test locations, and monitor beacon performance and maintenance with a mobile telephone.

The PLB3 features more built-in local aids to location in the form of the 121MHz homing signal, plus visible and infrared strobe lights.



The PLB3 from Ocean Signal offers an unprecedented level of safety and reassurance that will help save more lives at sea, while also aiding the rescue services in locating and helping survivors.

Richard Paul Russell Ltd

WindUltra

Launch: June 2023

Stand: SB33



Why is this product Innovative?

WindUltra represents a step change in ultrasonic anemometer design with innovative features making it easier to install while providing best-in-class performance, durability and specification. WindUltra's compact design has:

- Cleverly designed mounting options for readily available tubes.
- Easy-to-use alignment features with the sensor detachable from the mounting which also simplifies access to the cable connector.
- Built in optimised heating prevents condensation and icing, extending the operational temperature range while keeping the power required to a minimum.
- A wide range of data output formats and data rate up to 8Hz
- Operation to 75m/s (150 knots).



Description



- WindUltra represents a step change in ultrasonic anemometer design with innovative features making it easier to install while providing best-in-class performance, durability and specification. WindUltra's compact design has:
- Cleverly designed mounting options to attach to standard readily available tubes 25-26mm (1") diameter or 44-51mm (2") diameter (scaffolding poles) with the minimum use of tools, an important consideration when working at height.
- Easy-to-use alignment features with the sensor detachable from the mounting which also simplifies access to the cable connector.
- Built in optimised heating prevents condensation and icing, extending the operational temperature range while keeping the power required to a minimum.
- A wide range of data output formats and data rate up to 8Hz
- Operation to 75m/s (150 knots).

The WindUltra wind sensor can be used in a wide range of applications where it is necessary to have reliable wind information including cranes, wind farms, ships and ports. It is compatible with the stand holder's (stand SB33) WeatherFile.com cloud based weather information system providing access to the wind data on any internet connected device which is ideal for monitoring the wind conditions in ports and harbours.

Searchmaster ApS **SL680**

Launch: 5 August 2022
Stand: P22

SEARCHMASTER
INTELLIGENT SEARCHLIGHT

Why is this product Innovative?

This Searchlight is a completely new approach to searchlights. We have new facilities like auto tracking man overboard, radar targets, pitch and roll stabilisation, gyostabilisation, remote control - network system with multiple searchlights and multiple control stations.

Description

We have developed a searchlight that is high quality with features for the future. The searchlight is contained in a glass tube - with base and top in aluminium. The design is modern matching also modern ship design. It's rated IP66 and has been tested according to IEC60945. The design also ensures fast stabilisation of light beam. AIS and radar tracking for best performance in search and rescue situations.



All new features never seen before in searchlights. The SL680 is the strongest led searchlight available. The system has been sold to Danish Sar service and to Danish navy.

Shock-WBV Limited
**OMEGA - Shock Mitigating
Decking System**

Launch: 13 June 2023

Stand: L5

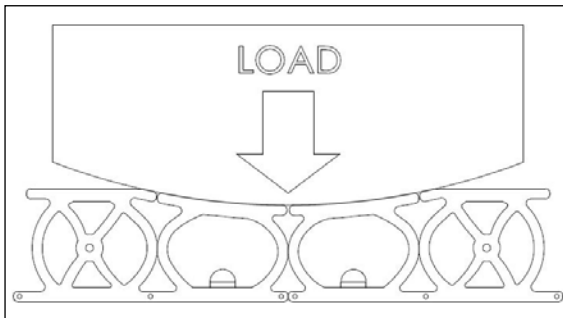


Why is this product Innovative?

Omega 38 uses our unique and Patented, Innovation award winning Omega profiles to produce a decking which progressively reduces the shock acceleration of a wave slam. Because of its progressive collapse ability it means that it works when being stood on but also when being knelt on. The kneeling aspect is a major and significant benefit as many fast small boats require a single knee down on the deck. OMEGA shock mitigating decking is a versatile, hard-wearing decking surface that can be made to fit all sizes and shapes of deck. OMEGA is a simple yet effective way to reduce shock and whole-body vibration caused by wave impacts. It can be used by a wide range of customers, from leisure boat users all the way through to commercial and military customers who need to safely operate on the water without being exposed to high levels of shock and vibration.



Description



OMEGA shock mitigating decking is a versatile hard wearing decking surface that can be made to fit all sizes and shapes of deck. OMEGA is a simple yet effective way to reduce shock and whole-body vibration caused by wave impacts. OMEGA can be used by a wide range of customers, from leisure boat users all the way through to commercial and military customers who need to safely operate on the water without being exposed to high levels of shock and vibration.

Simplex-Turbulo Co Ltd
DuraBrite Dual Mode

Launch: March 2023

Stand: G44



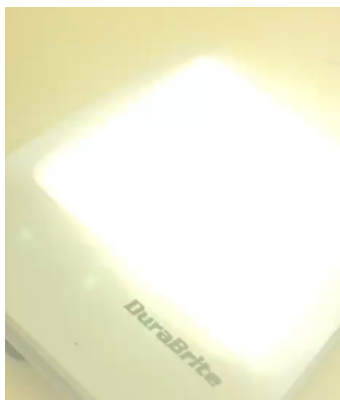
Why is this product Innovative?

DuraBrite have developed an innovative feature - the Dual Mode - for their Nano Series, the smallest in the DuraBrite LED lights family, a portable yet extremely powerful unit. With this custom feature a single unit can switch between two colours (e.g. white/amber, white/blue) or between modes (e.g. strobe, dazzler, signal, infrared, ultraviolet). The customisation options of colours and modes can cater for a variety of applications as wide as imagination can go!

Description

From the marine industry to land-based installations, the versatility and resistance to harsh operational environments of DuraBrite LED lights has already performed outstandingly in a variety of applications. This new feature opens even more possibilities for new applications.

The innovative Dual Mode feature DuraBrite have recently launched is available for the Nano Series LED lights, the smallest product of the DuraBrite family, a portable yet extremely powerful unit. With this custom feature a single unit can switch between two colours (e.g. white/amber, white/blue) or between modes (e.g. strobe, dazzler, signal, infrared, ultraviolet). The applications and customisation options of colours and modes provide as wide a variety as imagination can go!



By simply flicking a switch a floodlight can become a non-visible infrared light for military applications, a spotlight can turn into a dazzler to blind and slow down fugitives or smugglers, a police signal light can be switched to ultraviolet and reveal fluids in a crime scene. A particularly useful feature for the marine industry, the lights can switch between white and amber colours to cater for both clear and foggy weather.



Shearforce
**ConCEPS (Container Collective
Edge Protection System)**

Launch: 24 April 2023

Stand: SB39

SHEARFORCE

Why is this product Innovative?

It is a uniquely developed system, to allow more than one person to access the top of shipping containers to carry out maintenance etc without the need to harness on.



Description

The product provides collective edge protection. It can be installed from the top or the bottom of the shipping container, depending on what posts are purchased. It is robust, made from steel, can have painted, powder-coated or zinc finish and adheres to working at height regulations. It can be provided with a swing gate to allow for safe, easy access/egress. Made in the UK, we can customize the product to fit other type containers and for different applications.

Zwanny Ltd
Smoosh oil spillkit

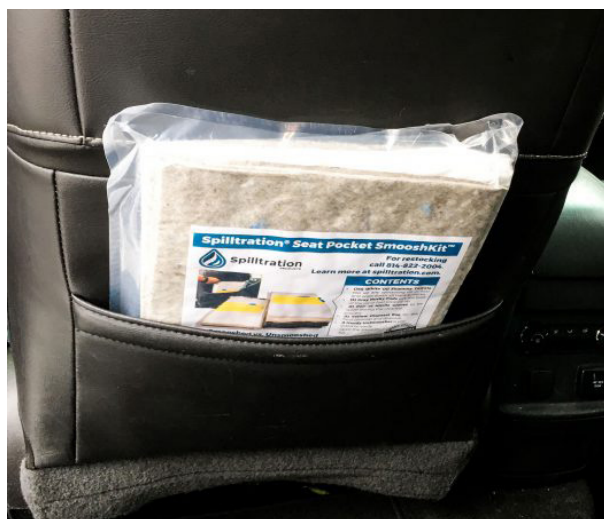
Launch: 01 April 2023

Stand: E14

Zwanny - Ltd 

Why is this product Innovative?

This spillkit is one of the smallest 25l oil spillkit in the market, as it is vacuum packed more can be stored in a cab or truck and easy to use.



Description

Small, but mighty. The Seat Pocket SmooshKit is just as the name sounds, designed to fit in the pocket behind your seat. Packed with 4.2 gallons worth of absorbency, it's perfect for your fleet applications where a kit is needed, but space is at a premium.