



Summary of Key Costs at IMEX America 2024





Electricity (exclusive supplier) early order deadline: Sept 17th

<u>120 volt</u>		<u>24hr</u>
500 Watts (5 AMPS)	105.00	210.00
1000 Watts (10 AMPS)	182.00	364.00
1500 Watts (15 AMPS)	217.00	434.00
2000 Watts (20 AMPS)	257.00	514.00

<u>208 volt – single phase</u>		<u>24hr</u>
5 AMP	228.00	456.00
10 AMP	316.00	632.00
15 AMP	371.00	742.00
20 AMP	440.00	880.00
30 AMP	505.00	1,010.00
60 AMP	639.00	1,278.00
100 AMP	935.00	1,870.00
200 AMP	1,343.00	2,686.00
400 AMP	2,361.00	4,722.00

<u>208 volt – three phase</u>		<u>24hr</u>
5 AMP	317.00	634.00
10 AMP	376.00	752.00
15 AMP	431.00	862.00
20 AMP	516.00	1,032.00
30 AMP	636.00	1,272.00
60 AMP	867.00	1,734.00
100 AMP	1,072.00	2,144.00
200 AMP	1,961.00	3,922.00
400 AMP	2,747.00	5,494.00

Plumbing (exclusive supplier)

early order deadline: Sept 17th

Water outlet	453.00 each
Drain outlet	453.00 each
Fill & drain 1-50 gallons	142.50 each
Fill & drain 51-200 gallons	380.00 each
Fill & drain 201-500 gallons	475.00 each
Additional 100 up to 1000 gallons	47.50 each

There is a minimum labor charge of (1) hour for installation and 1/2 hour for removal of all high voltage services and each water and drain outlet. Material charges may apply.

	<u>Electricity</u>	<u>Plumbing</u>
Straight time (1 hour)	106.00	99.00
Overtime (1 hour)	212.00	198.00





IMEX LAS VEGAS

OCTOBER 8-10 2024

Internet (exclusive supplier)

early order deadline: Sept 17th

Wired connection – shared	1,000.00 each
Wired connection (shared) – additional IP	325.00 each
Wired connection – dedicated bandwidth (public Ips)	3,900.00 each
Wired connection – dedicated bandwidth (NAT Ips)	2,900.00 each
Floor work (per line)	200.00 each

Mandalay Bay does not prohibit the use of wireless routers or access points, however please be aware there are many factors outside of their control which can disrupt your wireless signal (such as MiFi's, cell phone hotspots/tethering, wireless routers, etc.)

Audiovisual

early order deadline: Sept 2nd

Monitors

32" TV Monitor	300.00
43" 1080p HD Monitor	550.00
50" 4K Smart TV Monitor	800.00

Headphones

Tour Guide System with 5 headsets	500.00
Tour Guide System with 10 headsets	750.00
Wireless Bodypack Microphone	300.00

GES freight handling (exclusive supplier)

All freight must be sent to the GES advanced warehouse by September 30. The warehouse rate for this year is \$113.50 per CWT (1000 lb. minimum)
Please note: Shipments arriving before September 5 will incur a storage fee.

Direct shipping to show site will only be accepted on **Monday October 7 between 8:00 AM To 5:00 PM**, priced at \$122.00 per CWT.

Catering (exclusive supplier)

Request to distribute samples: To receive authorisation for distributing food or non-alcoholic beverages not purchased through Mandalay Bay (the exclusive Food & Beverage provider), please complete the form no later than 7 days prior to the show opening. [Link](#)

Show cleaning (exclusive supplier)

IMEX America has made arrangements for basic daily booth cleaning to be carried out at no charge to the exhibitor. This does not apply to the second storey booths where a charge will be made. The basic booth cleaning will include vacuuming and emptying of waste baskets and will be carried out after the show closes. As is usual, the cleaning of exhibits will remain your responsibility as will any special services that may be required such as the removal of bulk trash.

IMEX LAS VEGAS

OCTOBER 8-10 2024

Wall Insert Panel/Graphics

early order deadline: Sept 13th

1M Wall Insert Panel	111.50 each
3M Eco Friendly Banner	996.00 each
6M Eco Friendly Fabric Banner	1920.00 each
1M Counter Graphics	89.25 each



Each Shell Scheme booth wall is made of 3x 1m panels



A 3m banner will cover a single 10ft booth wall

Header Graphics

early order deadline: Sept 13th

Angled Header	441.00 each
---------------	-------------

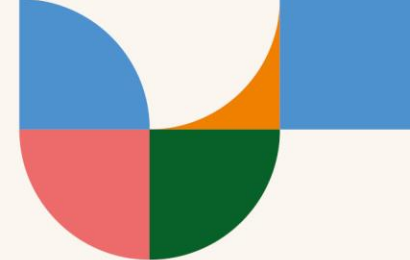


Curved Header	441.00 each
---------------	-------------



Super Header	235.75 each
--------------	-------------





Furniture

early order deadline: Sept 13th

Individual items

Starbase Table (30" D x 40" H)	222.50 each
Padded Stools	131.00 each
1M Lockable Counter	450.00 each
Wastebasket	21.95 each

Packages

Furniture Package 2	434.50 each
Bar Classic Package 2	657.02 each
Chair Package A	461.95 each

*Note - the Hardwall Booth package comes with the following free furniture:
 1x Starbase Table (30" D x 40" H)
 2x Padded Stools
 1x Lockable Counter
 1x Recycling Wastebasket
 1x Waste Basket
 Carpet (5 colours to choose from)*



Furniture Package 2



Bar Classic Package 2



Chair Package A

**All prices within this document are subject to change at the discretion of the service provider.
 Only prices at time of order placement are confirmed.
 All prices in USD unless otherwise stated. Tax not included.**

